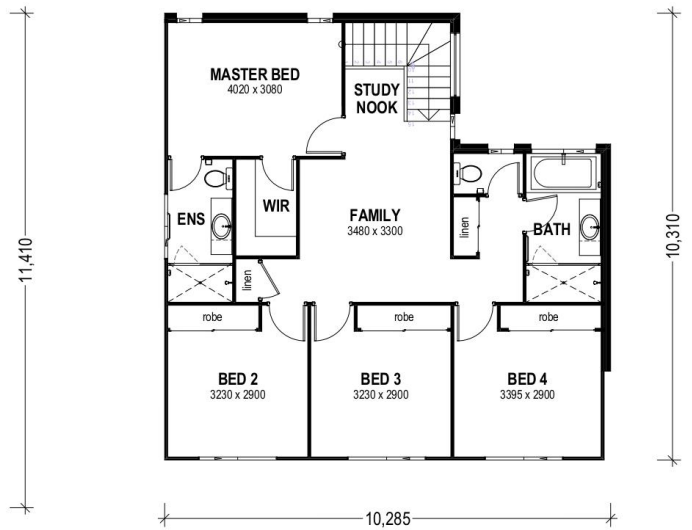
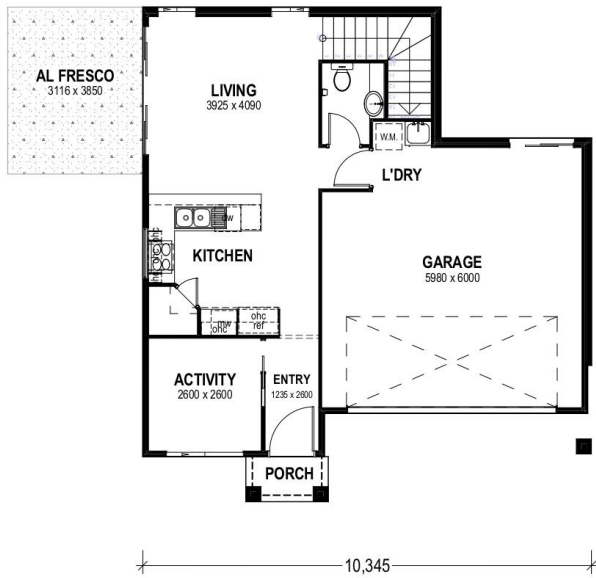


# BRIBIE 189



## FLOOR AREAS

Lower Living	41.27m <sup>2</sup>
Upper Living	95.54m <sup>2</sup>
Garage	39.32m <sup>2</sup>
Porch	1.81m <sup>2</sup>
Alfresco	11.99m <sup>2</sup>
<b>Total</b>	<b>189.93m<sup>2</sup></b>

MIN. BLOCK WIDTH 12.5m

Width 10.345m / Length 11.410m

Entry Portico Size Will Vary  
Depending on Façade Type.

May not suit all blocks  
depending on façade type.

All Images are for illustrative purposes only and all  
dimensions are approximate



**Building the  
Queensland  
Lifestyle**

[www.invisionhomes.com.au](http://www.invisionhomes.com.au)

QBCC Licence 1089281